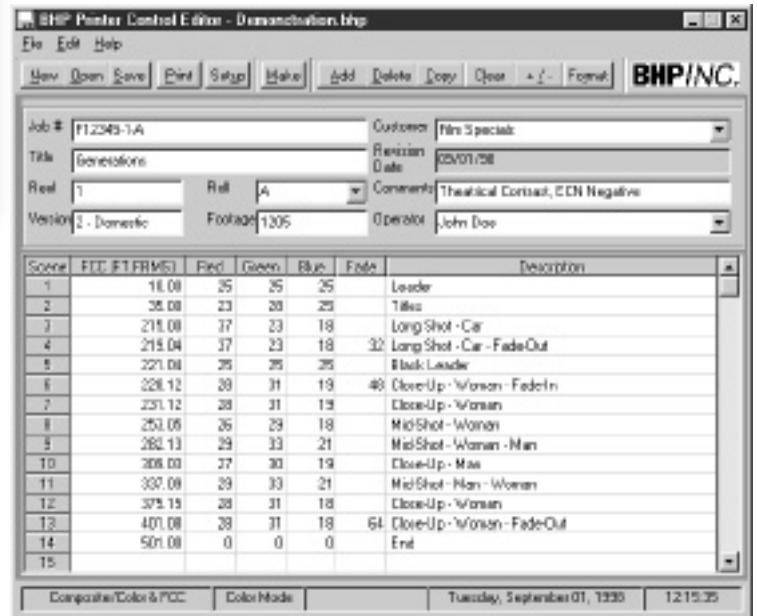


**BHP/INC.**

# PRINTER CONTROL EDITOR®

## New Computer Software

FOR MANAGING PRINTER CONTROL DATA



***BHP announces BHP Printer Control Editor® software, a new tool for accumulating, editing and archiving light valve, fader and frame count cue printer control data. Use the BHP Printer Control Editor® software in conjunction with the new BHP PCSII Printer Control System to load printer control data into BHP Printers using conventional 3-1/2 inch floppy disks instead of traditional paper program tapes.***

Even though paper program data tapes have been a universal standard for motion picture printers for many years, the new BHP Printer Control Editor® software provides a considerably more efficient way to accumulate, edit, load, and then archive printer control data using a standard personal computer (with Windows 95/NT, or later, operating system) and 3-1/2 inch floppy disks. Using a familiar "timing sheet" format, printer control data can be quickly and accurately tabulated and changed if re-timing becomes necessary. The easy-to-understand timing sheet layout and laboratory oriented data entry, editing and archival storage procedures provide an immediate and significant improvement over preparation and use of paper program tapes. Printer control data is easily downloaded to conventional 3-1/2 inch floppy disks for convenient transfer into the BHP PCSII Printer Control System for printing.

Quickly and easily enter up to 2,500 scenes of light valve, fader and frame count cue control data, along with scene descriptions and associated job tracking information, using the BHP Printer Control Editor® and a personal computer with the Windows 95/NT (or later) operating system.

Use the BHP Printer Control Editor® to edit printer control data changes, additions and/or deletions, and then store all job data in a secure, centralized file server rather than on paper tapes.

Import printer control data directly into the BHP Printer Control Editor® from HFC (Hazeltine), Filmlab Colormaster/Labnet and Bremson CVIS files.

To load printer control data, simply insert the program floppy disk into the disk drive on the Printer. No more waiting for long paper tapes to feed through the reader. No more tape jams or misreads.

Integrate existing computer system for immediate improvements. BHP Printer Control Editor® software is easy to learn and use. Get started quickly with minimal operator training.

Eliminate the need for stocking paper tape, and for operating and maintaining expensive and hard-to-find paper tape punch equipment.

**BHP/INC.**

**PRINTER  
CONTROL  
EDITOR®**

### TECHNICAL SUPPORT

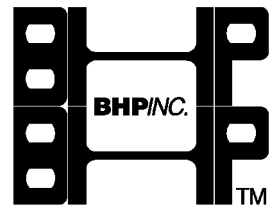
The terms and conditions of BHP technical support for the BHP Printer Control Editor® Software are set forth in the BHP Printer Control Editor® User's Guide provided with the BHP Printer Control Editor® Software.

### SOFTWARE LICENSE/WARRANTY

The terms and conditions of the BHP Printer Control Editor® Software License and Warranty Statement are set forth in the BHP Printer Control Editor® User's Guide. Copies of that Statement are available on request.

### ORDERING INFORMATION

<b>Part Number</b>	<b>Description</b>
038638	BHP Printer Control Editor® Software and User's Guide
	PCSII control systems with floppy disk data entry capability are supplied as standard equipment on all new BHP Model 6131 series Modular Printers.
	PCSII conversion kits are also available to upgrade existing Model 6123, 6124, 6125 and 6127 Modular Printers. An accessory external floppy disk drive data entry system is also available for installation on most Model C Printers equipped with PCS reader/controllers.
	Contact your BHP representative for complete information on Model 6131 Printers and conversion Kits, and assistance in selecting the Printer model and accessories best suited to your film printing requirements.



**BHP INC.**

1800 Winnemac Avenue  
Chicago, Illinois 60640-2662, USA  
773-989-2140 • FAX 773-989-2144  
E-mail: [bhpic@usa.net](mailto:bhpic@usa.net)

Europe, Africa, Middle East:

**RTI-UK/Lipsner Smith**

Unit 6, Swan Wharf  
Waterloo Road  
Uxbridge UB8 2RA  
England  
01895-252191  
FAX 01895-274692

India, Asia, South Pacific:

**Imaging and Sound  
Systems International, Ltd.**

9A, Fui Nam Building  
48-51 Connaught Road West  
Hong Kong  
517-8768  
FAX 517-6968

Japan:

**Seiki Company, Ltd.**

No. 18, Hasunumacho  
Itabashi-Ku  
Tokyo 174  
Japan  
03-39654101  
FAX 03-39654104