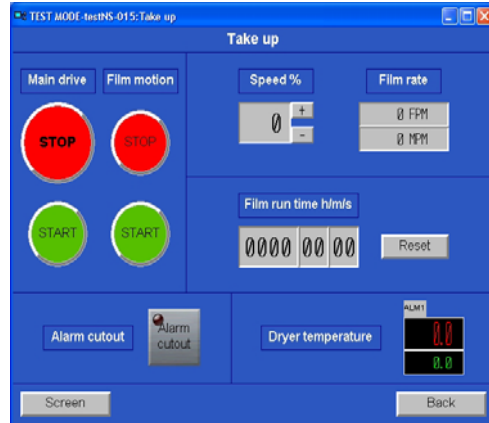


TOUCH SCREEN CONTROL FOR CALDER PROCESSORS

Computer Control of Calder Machines

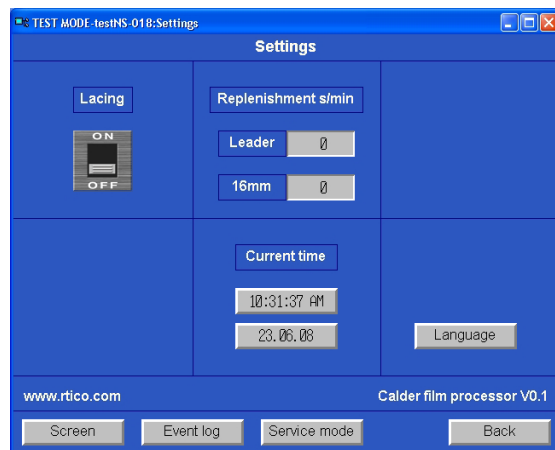
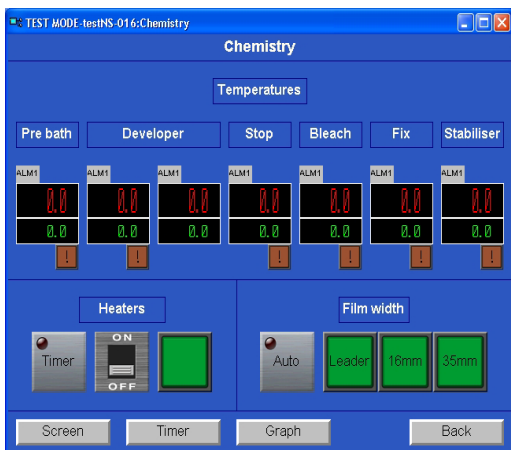
Using up to date Machine Management Technology Calder are able to offer the latest PLC (Programmable Logic Control) and HMI (Human Machine Interface) units on their full range of Film Processors.

The 8" HMI Colour Touch Screen supports all European Languages and Cyrillic so a client may fill in an Excel sheet in their own language that is then incorporated into the Touch Screen programme by Calder Engineers thus making life simpler for the machine operators.



This control equipment has been chosen for its robust nature and its worldwide support, the programmes are written by Calder engineers to ensure that they meet with the client's stringent needs.

With the machine being controlled and all of the relevant information displayed on a one Touch Screen in Colour Alarm reports and Chemical Temperature trends may also be viewed and printed. Alternatively this information may be Transmitted from several machines via a Network (LAN or WAN) to a central Computer for further analysis and reporting.



Corporate Headquarters - RTI
 4700 Chase Avenue, Lincolnwood, IL 60712-1689, USA
 Telephone: + 847 677 3000 Fax: + 847 677 1311
 Email: sales@rtico.com Web: www.rtico.com

International Office - RTI (UK) Limited
 Unit 6, Swan Wharf, Waterloo Rd, Uxbridge, Middx, UB8 2RA, UK
 Telephone: + 44 (0) 1895 252191 Fax: + 44 (0) 1895 274692
 Email: RTI-inbox@rtiuk.co.uk Web: www.rtico.com